



GENERAL PARTICULARS

Multipurpose dry cargo ship,
strengthened for heavy cargo,
15 mts/sqm on tanktop, singledecker,
1 hold, steelfloored, gearless

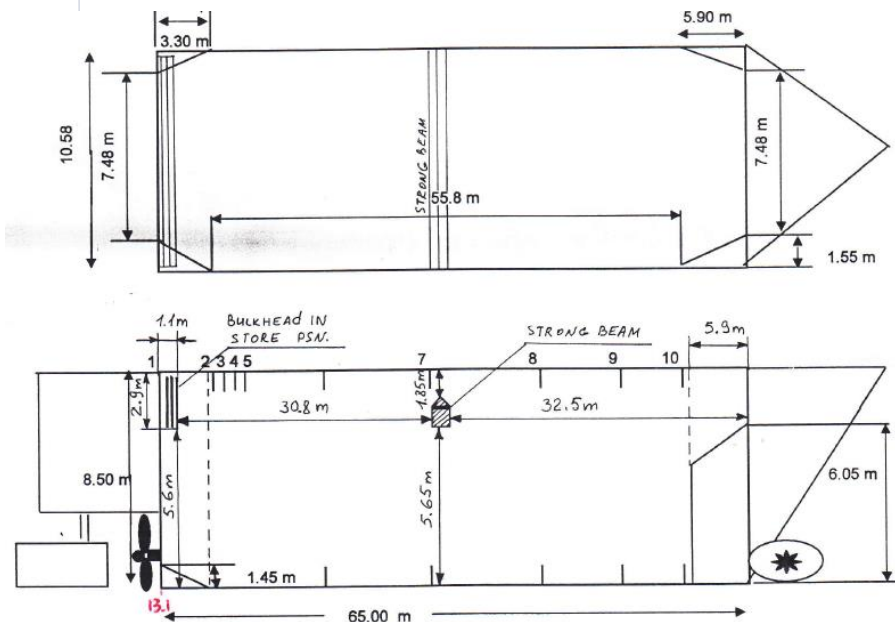
Grain fitted, FESI fitted, Cement fitted,
CO₂ fitted, fully ITF fitted, IWL limits

GL: 100 A5, G SOLASD-II-2,
Reg. 19DBC, MC AUT / ISM GL

Main Engine STORK 1840 KW
Bow thruster 240 KW

GT/NT	2.848/1.601t
DWAT	4.264mts
DWCC	4.000mts
Grain/Bale	203.000 cbft
LOA	90,46 m
BEAM	13,20 m
Draft fully	5,75 m
Speed	abt. 10 kn

Flag	A+B
Port of registry	St. John's, Antigua
Built	1996 (NL)
Yard	Bodewes Hoogezand
P&I Club:	British steamship
Call sign	V2QQ8
IMO	9136137
Inmarsat	430526911
Phone	+37256288816
E-Mail:	naos9136137@gmail.com



- all details without guarantee -

